

envision

envision

IP Camera

# PRODUCT BROCHURE

Product Catalogue Q1 2018





## ABOUT US

Envision Network Technologies is a designer and manufacturer of professional video surveillance equipment. Founded in 2002 our company is based in Bangalore and in the past sixteen years ENVISION has become one of the leading surveillance video manufacturers in India. Envision makes every effort on the innovation of technology, product and implementation. Envision product range comes with a robust design and state of art technology.

Envision is an ISO 9001:2008 certified which gives confidence to our customers in products and services deliveries. Envision is committed to providing quality and quality is only mantra for us to satisfy our customers.

Our Product Range are not only affordable and useful but also technically sound and equally effective in terms of modern day requirements. All our products are certified by CE, FCC, & RoHS . Envision has earned the reputation of being one of the emerging brand in the country by delivering continuous performance and trusted services.

## OUR MISSION

Envision's mission is to exceed our clients specific and customized surveillance needs by delivering the highest quality of professional products & services based on trust and confidence.

## OUR VISION

Our vision is to be one of the most professional and admirable surveillance brand in the industry by exceeding our customers' expectations and creating a sustainable partner ecosystem across the country, while valuing each and every employee.

## CORE VALUE

We value quality product , healthy partnerships, integrity, exceptional customer service, personal growth, and community leadership.

**IP Camera's**

**E1ID3N42N1**

**5MP IP Dome Camera With In-Built SD Card & Motorized Lens**



- 1/3" High Resolution CMOS Sensor
- 5MP@15fps, 2560X1440@20fps,
- 3MP/1080P/720P@30fps
- 2.8 - 12mm Motorized Lens
- Supports SD Card up to 32GB
- 30 Pcs IR LED, 25Mtr IR Distance
- WDR, 1/1 Alarm, 1/1 Audio,
- Metal Vandal Proof
- Ingress protection IP66

**E1IB3N4311**

**5MP IP Bullet Camera with In-Built SD Card Motorized Lens**



- 1/3" High Resolution CMOS Sensor
- 5MP@15fps, 2560X1440@20fps,
- 3MP/1080P/720P@30fps
- 2.8 - 12mm Motorized Lens
- Supports SD Card up to 32GB
- 3 Pcs Array LED, 50-60 Mt IR Distance
- WDR, 1/1 Alarm, 1/1 Audio,
- Metal Vandal Proof
- Ingress protection Ip66

**E1ID1N12N1**

**5MP IP Dome Camera**



- 1/3" High Resolution CMOS Sensor
- Recording upto 2592(H) X 1944(V)
- 3.6mm Fixed Lens
- 24 Pcs IR LED, 20Mtr IR Distance
- External PoE Included
- Supports WDR ,BLC
- Support P2P Cloud
- Metal Vandal Proof
- Ingress Protection IP66

**E1IB2N1311 / 2311**

**5MP IP Bullet Camera**



- 1/3" High Resolution CMOS Sensor
- Recording upto 2592(H) X 1944(V)
- 3.6 / 6 mm Fixed Lens
- 48 Pcs IR LED, 40Mtr IR Distance
- Internal PoE
- Support WDR, HLC, BLC
- Support P2P Cloud
- Metal Vandal Proof
- Ingress Protection IP66

**E1ID4L4311**

**2MP IP Varifocal Dome Camera**



- 1/2.8" Sony Progressive CMOS Sensor
- 25fps@1080P
- 2.8 - 12mm Varifocal Lens
- 36 Pcs IR LED, 30Mtr IR Distance
- External PoE Included
- Support WDR, BLC
- Support P2P Cloud
- Metal Vandal Proof
- Ingress Protection IP66

**E1IB4L4311**

**2MP IP Varifocal Bullet Camera**



- 1/2.8" Sony Progressive CMOS Sensor
- 25fps@1080P
- 2.8 - 12mm Varifocal Lens
- 42 Pcs IR LED, 40Mtr IR Distance
- Internal PoE
- Support WDR, BLC
- Support P2P Cloud
- Metal Vandal Proof
- Ingress Protection Ip66

**E1ID1L13N1**

**2MP IP Dome Camera**



- 1/2.8" Sony Progressive CMOS Sensor
- 25fps@1080P
- 3.6mm fixed Lens
- 24 Pcs IR LED, 20 Mtr IR Range
- Included External POE
- Support WDR, BLC
- Support P2P Cloud
- Metal Vandal Proof
- Ingress Protection Ip66

**E1IB1L1311**

**2MP IP Bullet Camera**



- 1/2.8" Sony Progressive CMOS Sensor
- 25fps@1080P
- 3.6mm fixed Lens
- 36 Pcs IR LED, 30 Mtr IR Range
- POE Support
- Support WDR, BLC
- Support P2P Cloud
- Metal Vandal Proof
- Ingress Protection Ip66

**E2IP1L63N1**

**2MP IP Outdoor PTZ Camera - 22X**



- 1/2.7" CMOS Sensor
- 25fps@1080P
- 3.9 - 85mm Lens
- 22X Optical Zoom
- 120Mtr IR Distance
- 6 High Power IR Lamp and
- 2 Micro Laser Lamp
- WDR, Built-in Defogger
- Support P2P Cloud
- Lighting Protection, IP66

**E2IP2L93N4**

**2MP IP Outdoor PTZ Camera - 36X**

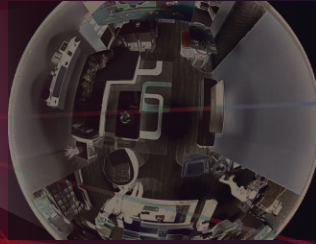


- 1/2.7" CMOS Sensor
- 25fps@1080P
- 4.6 - 165mm Lens
- 36X Optical Zoom
- 150Mtr IR Distance
- 6 High Power IR Lamp and
- 2 Micro Laser Lamp
- WDR, Built-in Defogger
- Support P2P Cloud
- Lighting Protection, IP66

**Enhancing Your Security**



### 1.3 MP Fisheye Wireless VR Camera



#### E11F1K1212

- 1.3 Megapixel High Definition resolution
- 1/3" SmartSens CMOS Sensor
- 1.4 mm HD Fixed Lens
- 180° Wide angle coverage
- Day/Night (ICR), Onvif 2.4 compatible
- Support DWDR, BLC, AGC
- Support Motion Detection, Video blind, Mirror, Flip
- 3 pcs Dot Array LEDs up to 20 Meter IR Distance
- Plastic indoor housing



### Wireless Bullet camera with in-built SD Card



#### E11B1L13WS

#### 2 MP Wireless Bullet camera with in-built SD Card Slot

- 2 Megapixel High Definition resolution
- 1/3" SC1135 Image Sensor
- 3.6 mm Fixed Lens
- Day/Night (ICR), AWB, 3D-DNR, IR-CUT
- Support SD Card up to 64GB
- Support DWDR, BLC and Onvif 2.4 compatible
- Support Motion Detection, Privacy Mask, Mirror, rotate
- 36 Pcs IR LEDs up to 30 Meter IR Distance
- Metal Vandal Proof
- Ingress Protection IP66 Water Resistant



#### E11B1K13WS

#### 1.3 MP Wireless Bullet camera with in-built SD Card Slot

- 1.3 Megapixel High Definition resolution
- 1/3" SC1135 Image Sensor
- 3.6 mm Fixed Lens
- Day/Night (ICR), AWB, 3D-DNR, IR-CUT
- Support SD Card up to 64GB
- Support DWDR, BLC and Onvif 2.4 compatible
- Support Motion Detection, Privacy Mask, Mirror, rotate
- 36 Pcs IR LEDs up to 30 Meter IR Distance
- Metal Vandal Proof
- Ingress Protection IP66 Water Resistant

**AHD Camera's**

**E1CD3L4212**

**1080P AHD Dome Varifocal Camera**

- 1/2.7 Full HD CMOS Sensor
- 2.8 - 12 mm Varifoacal lens
- 36 Pcs IR LED, 25 Mtr IR Range
- AWB,Auto (ICR)
- Transmission Distance over 500 Mtr via
- 75-3 coaxial cable
- Metal Vandal Proof
- Ingress Protection IP66

**E1CB3L43N4**

**1080P AHD Bullet Varifocal Camera**

- 1/2.7 Full HD CMOS Sensor
- 2.8 - 12 mm Varifoacal lens
- 42 Pcs IR LED, 40 Mtr IR Range
- AWB,Auto (ICR)
- Transmission Distance over 500 Mtr via
- 75-3 coaxial cable
- Metal Vandal Proof
- Ingress Protection IP66

**E2BP2L83N4**

**2MP AHD PTZ Dome 30X**



- 1/2.7" Full HD CMOS Sensor
- 4.1mm - 120mm Varifocal Lens
- 4 pcs Array 42Mil IR LED and 2pcs laser LED
- IR Distance up to 130 Mtr
- Support 30X Digital Zoom
- AWB,Auto (ICR), BLC, D-WDR
- Transmission Distance over 500 Mtr via
- 75-3 coaxial cable
- Lighting Protection, IP66

**E2BP2L93N4**

**2MP AHD PTZ Dome 36X**



- 1/2.7" Full HD CMOS Sensor
- 4.6mm - 165mm Varifocal Lens
- 4 pcs Array 42Mil IR LED and 2pcs laser LED
- IR Distance up to 150 Mtr
- Support 36X Digital Zoom
- AWB,Auto (ICR), BLC, D-WDR
- Transmission Distance over 500 Mtr via
- 75-3 coaxial cable
- Lighting Protection, IP66

**NVR**

**E1N2008N21**

**8 Channel NVR - 2 SATA**



- Full HD Recording Resolution @1080P
- 8CH@1080P / 12CH@960P
- 2 SATA Port Supports up to 2 x 6TB
- Support Motion Detection
- Support Email alerts
- Support P2P Cloud
- HDMI & VGA Full HD Output

**E1N2024NN3**

**32 Channel NVR - 2SATA**



- 32CH@1080P / 32CH@960P Recording
- 8CH@5MP / 16CH@4MP
- 2 SATA Port Supports up to 2 x 6TB
- Support Motion Detection
- Support Email alerts
- Support P2P Cloud
- HDMI & VGA Full HD Output

**4K NVR**

**E1N2008N2N**

**9 Channel 4K NVR, 2 SATA**

- 9x(1920\*1080)+Sub[960\*576]+4Ref.+4Play
- 9x(2592\*1944)+Sub[960\*576]+4Ref.+4Play
- 9CH Network Audio Input / Output
- 2 SATA Port Supports up to 2 X 6TB
- 2 USB Port
- Support Motion detection & Email alerts
- Support P2P Cloud
- HDMI, VGA Output

**E1N4032N2N**

**36 Channel 4K NVR, 4 SATA**



- 36x(1280\*960)+Sub[640\*360]+4Ref.+9Play
- 16x(2592\*1944)+Sub[960\*576]+4Ref.+1Play
- 36 CH Network Audio Input / Output
- 4 X 6 TB SATA + 1 E-SATA
- 2USB \* 2.0 and 1USB \* 3.0
- Support Motion detection & Email alerts
- Support P2P Cloud
- HDMI & VGA Full HD 4K Output

**E1N8064N2N**

**64 Channel 4K NVR, 9 SATA**



- 64x(2592\*1944)+Sub[960\*576]+4Ref.+4Play
- 16x(1920\*1080)+Sub[640\*360]+4Ref.+9Play
- 64 CH Network Audio Input / Output
- 9 X 6 TB SATA + 1 E-SATA
- 2USB \* 2.0 and 1USB \* 3.0
- Support Motion detection & Email alerts
- Support P2P Cloud
- HDMI & VGA Full HD 4K Output

**4K NVR with Video Analytics**

**E1N4016N21**

16 Channel 4K NVR With Video Analytics  
- 2 SATA

- 16 X (4096\*2160) + sub[960\*576] +4Ref.+4 Play
- 9 X (2592\*1944)+sub[960\*576]+4Ref.+4 Play
- 16 CH Network Audio Input / Output
- 4 SATA X 6TB + 1 E-SATA & 3 USB PORT
- Support Motion detection & Email alerts
- Asset Tracking, Lince Crossing, Goods loss
- Virtual Fence, Lince Crossing, Goods loss
- HDMI & VGA Output

**E1N8032N21**

36 Channel 4K NVR With Video Analytics  
- 4 SATA

- 36 X (4096\*2160) + sub[960\*576] +4Ref.+4 Play
- 36 X (2592\*1944)+sub[960\*576]+4Ref.+4 Play
- 36 CH Network Audio Input / Output
- 4 SATA X 6TB + 1 E-SATA & 3 USB PORT
- Support Motion detection & Email alerts
- Support Intelligent Analytics Object count,
- Lince Crossing, Goods loss
- HDMI & VGA Ultra HD 4K Output

**E1N2064N21**

64 Channel 4K NVR With Video Analytics  
- 9 SATA

- 64 X (4096\*2160) + sub[960\*576] +4Ref.+4 Play
- 64 X (2592\*1944)+sub[960\*576]+4Ref.+4 Play
- 64 CH Network Audio Input / Output
- 9 SATA X 8TB + 1 E-SATA & 3 USB PORT
- Support Motion detection & Email alerts
- Support Intelligent Analytics Object count,
- Lince Crossing, Goods loss
- HDMI & VGA Ultra HD 4K Output

**E1N8064N21**

128 Channel 4K NVR With Video Analytics  
- 16 SATA

- 128 X (4096\*2160) + sub[960\*576] +4Ref.+4 Play
- 128 X (2592\*1944)+sub[960\*576]+4Ref.+4 Play
- 128 CH Network Audio Input / Output
- 16 SATA X 8TB + 1 E-SATA & 3 USB PORT
- Support Motion detection & Email alerts
- Support Intelligent Analytics Object count,
- Lince Crossing, Goods loss
- HDMI & VGA Ultra HD 4K Output



**3 in 1 Tribrid NVR/DVR**

**E1B2004N25**

4 Channel IP/AHD Tribrid NVR/DVR - 1080N  
with (2 SATA)

- H.264 Compression
- 4 Channel Tribrid DVR (AHD / IP / Analog)
  - \* DVR Mode - 4 X Analog / AHD (1080N)
  - \* HVR Mode - 2 X AHD/Analog + 2 X IP (720P)
  - \* NVR Mode - 8 X IP (1080P)
- Supported Motion Detection, Privacy masking
- 4Ch Audio in, 1Ch Audio Out
- 2 SATA Port up to 2X6TB
- 3 USB port
- HDMI & VGA Full HD output

**E1B2024N25**

24 Channel IP/AHD Tribrid NVR/DVR 1080N  
With (2 SATA)

- H.264 Compression
- 24 Channel Tribrid DVR (AHD / IP / Analog)
  - \* DVR Mode - 24 X Analog / AHD (1080N)
  - \* HVR Mode - 8 X AHD/Analog + 8 X IP (960P)
  - \* NVR Mode - 8 X 5MP, 16 X 3MP, 32 X 2MP
- Supported Motion Detection, Privacy masking
- 16Ch Audio in, 1Ch Audio Out
- 2 SATA Port up to 2X6TB
- 2 USB port
- HDMI, VGA Full HD output

**E1B2032N25**

32 Channel IP/AHD Tribrid NVR/DVR 1080N  
With (2 SATA)

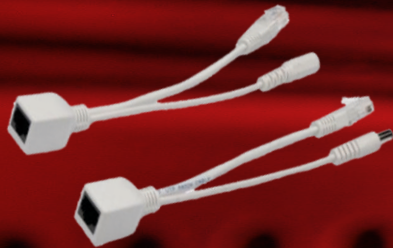
- H.264 Compression
- 32 Channel Tribrid DVR (AHD / IP / Analog)
  - \* DVR Mode - 32 X Analog / AHD (1080N)
  - \* HVR Mode - 8 X AHD/Analog + 8 X IP (960P)
  - \* NVR Mode - 8 X 5MP, 16 X 3MP, 32 X 2MP
- Supported Motion Detection, Privacy masking
- 16Ch Audio in, 1Ch Audio Out
- 2 SATA Port up to 2X6TB
- 2 USB port
- HDMI, VGA Full HD output

**E1B8032N26**

32 Channel IP/AHD Tribrid NVR/DVR 1080N  
(8 SATA)

- H.264 Compression
- 32 Channel Tribrid DVR (AHD / IP / Analog)
  - \* DVR Mode - 32 X Analog / AHD (1080N)
  - \* HVR Mode - 8 X AHD/Analog + 8 X IP (960P)
  - \* NVR Mode - 8 X 5MP, 16 X 3MP, 32 X 2MP
- Supported Motion Detection, Privacy masking
- 16Ch Audio in, 1Ch Audio Out
- 8 SATA Port up to 8X6TB
- 2 USB port
- HDMI, VGA Full HD output

**Accessories**



**PoE Splitter**



12V 1Amp / 12V 2Amp



12V 5Amp (4port Output)



12V 10Amp (8port Output)



**PoE Extender**

**AHD Mobile DVR**

**E1B2004N2B**

**4 Channel AHD Mobile DVR - Basic  
(Single SD Card)**



- H.264 Video Compression
- 8-36V Wide Voltage, Low power consumption
- SD Card Storage (Single SD Card Max 128GB)
- Exclusive pre-allocated file system, solve the file fragmentation / SD lost / file
- Garbled etc. issue, protect data file
- Support 4CH alarm input, 1CH independent alarm output

**E1B1004N24**

**4 Channel AHD Mobile DVR - Single Card  
+ 3G + GPS**



- H.264 Video Compression
- 8-36V Wide Voltage, lower power consumption
- SD Card Storage (SD Card Max 1x128GB)
- Support 4CH alarm input, 1CH independent alarm output
- Support GPS / BD / G-sensor module extension
- Support Broadcast / Intercom / Textsent etc.
- Sensor/POS/LED Advertisement Panel
- High vibration Aviation plug

**E1B2004N24**

**4 Channel AHD Mobile DVR - SD Card  
+ HDD + 4G + GPS**



- H.264 Video Compression
- 8-36 Wide Voltage, lower power consumption
- SD Card Storage (Support upto 128GB)
- Support GPS / BD / G-sensor module extension
- Realize real-time monitor through 4G
- Support Broadcast / Intercom/ Text sent etc.
- Sensor/POS/LED Advertisement Panel
- High vibration Aviation plug
- Support 1x2TB HDD and 4CH alarm output



**Envision Mobile DVR with  
Live Video and GPS Tracking**





**IP Camera's**

**E1ID1K13N1**

**1.3MP IP Dome Camera**



- 1/3" Sony Progressive CMOS Sensor
- 3.6mm fixed Lens
- Included External POE
- 20 Mtr IR Range
- 25fps@1080P
- ONVIF 2.4
- IP66 & Vandal Proof, BLC, P2P Cloud

**E1IB1K2311**

**1.3MP IP Bullet Camera**



- 1/3" Sony Progressive CMOS Sensor
- 6mm fixed Lens
- POE Support
- 30 Mtr IR Range
- 25fps@960P
- ONVIF 2.4
- IP66 & BLC, P2P Cloud

**E1ID1J13N1**



- 1/4" Progressive CMOS Sensor
- 3.6mm Fixed Lens
- Included External POE
- 20 Mtr IR Range
- 25fps@720P
- ONVIF 2.4
- IP66 & Vandal Proof, BLC,P2P Cloud

**E1IB1J2311**



- 1/4" Progressive CMOS Sensor
- 6mm Fixed Lens
- POE Support
- 30 Mtr IR Range
- 25fps@720P
- ONVIF 2.4
- IP66, BLC, P2P Cloud

**E1CD1L1112**

**1080P AHD Dome Camera**



- 1/2.8" CMOS Sensor
- 3.6mm fixed lens
- 24 Pcs IR LED
- 20 Mtr IR Range
- AWB,Auto (ICR), IP64
- Transmission Distance over 500 Mtr via 75-3 coaxial cable

**E1CB3L13N4**

**1080P AHD Bullet Camera**



- 1/2.8" CMOS Sensor
- 3.6mm fixed lens
- 24 Pcs IR LED
- 20 Mtr IR Range
- AWB,Auto (ICR), IP64
- Transmission Distance over 500 Mtr via 75-3 coaxial cable

**E1BD1K1122**

**960P AHD Bullet Varifocal Camera**



- 1/3" Sony CMOS Sensor
- 2.8 - 12 mm Varifoacal lens
- 24 Pcs IR LED
- 20 Mtr IR Range
- AWB,Auto (ICR), IP64
- Transmission Distance over 500 Mtr via 75-3 coaxial cable

**E1BB3K1322**

**960P AHD Dome Varifocal Camera**



- 1/3" Sony CMOS Sensor
- 2.8 - 12 mm Varifoacal lens
- 36 Pcs IR LED
- 25 - 30 Mtr IR Range
- AWB,Auto (ICR), IP66
- Transmission Distance over 500 Mtr via 75-3 coaxial cable

**E1BD1J1111**

**720P AHD Dome Camera**



- 1/2.8" CMOS Sensor
- 3.6mm fixed lens
- 24 Pcs IR LED
- 20 Mtr IR Range
- AWB,Auto (ICR), IP64
- Transmission Distance over 500 Mtr via 75-3 coaxial cable

**E1BB3J1312**

**720P AHD Bullet Camera**



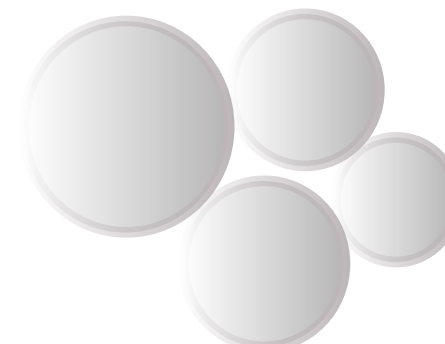
- 1/2.8" CMOS Sensor
- 3.6mm fixed lens
- 24 Pcs IR LED
- 20 Mtr IR Range
- AWB,Auto (ICR), IP64
- Transmission Distance over 500 Mtr via 75-3 coaxial cable

**E2AP1B732N**

**650TVL 22X Analog outdoor PTZ Camera**



- 1/3" Super HAD II Sony Effio Sensor
- IR LED Working Distance:100m
- Lens: 3.9 - 85.5mm
- Horizontal resolution: 650 TV Line
- Waterproof - IP66
- Auto Temperature Control



**1 MP Wireless IP Pan Tilt Camera**



- 1 MP HD Resolution
- Lenns: 3.6mm
- Built-in MIC and Speaker
- Supports Dual Stream & Mobile View
- Supports P2P envision Cloud
- Supports Motion Detection, Privacy Mask
- Support Wi-Fi, 10/100 Ethernet
- Supports SD Card up to 64 GB
- Day & Night IR with 10pcs IR LEDs
- Two way Voice Communication

**1.3 MP Wireless IP Pan Tilt Camera**



- 1.3 MP HD Resolution
- Lens: 3.6mm
- Built-in MIC and Speaker
- Supports Dual Stream & Mobile View
- Supports P2P envision Cloud
- Supports Motion Detection, Privacy Mask
- Support Wi-Fi, 10/100 Ethernet
- Supports TF Card up to 64 GB and Network Storage
- Day & Night IR with 10pcs IR LEDs
- Two way Voice Communication



**NVR**

**8 Channel NVR - 1SATA**



- 8CH@1080P / 8CH@D1 Recording
- 8CH Audio Input / Output
- 1SATA Port Supports up to 4TB
- Supports Mobile View
- Supports P2P cLOUD
- HDMI, VGA Output

**E1N1004B3N**

**4 Channel NVR - 1SATA**



- 4CH@1080P / 8CH@D1 Recording
- 1CH Audio Input / Output
- 1SATA Port Supports up to 4TB
- Supports Mobile View
- Supports P2P Cloud
- HDMI, VGA Output

**Hybrid Video Recorder**

**E1B2016R34**

**16 Channel AHD Hybrid DVR - 2 SATA**



- H.264 Compression
- 16 Channel Hybrid DVR (AHD / Analog)
- 16ch@720p Recording Resolution
- Supported Motion Detection, Privacy masking
- 16Ch Audio in, 1Ch Audio Out
- 2 SATA Port up to 4TB and 2 USB Port
- HDMI, VGA & BNC output

**Hybrid Video Recorder**

**E1B2008N26**

**8 Channel IP/AHD Tribrid NVR/DVR, 1080P, 2 SATA**



- H.264 Compression
- 8 Channel Tribrid DVR (AHD / IP / Analog)
- Supported Motion Detection, Privacy masking
- 4Ch Audio in, 1Ch Audio Out
- Two way Audio Communication
- 2 SATA Port up to 2X4TB
- HDMI, VGA output and 2 USB Port

**E1B1008N26**

**8 Channel IP/AHD Tribrid NVR/DVR, 1080N, 1 SATA**



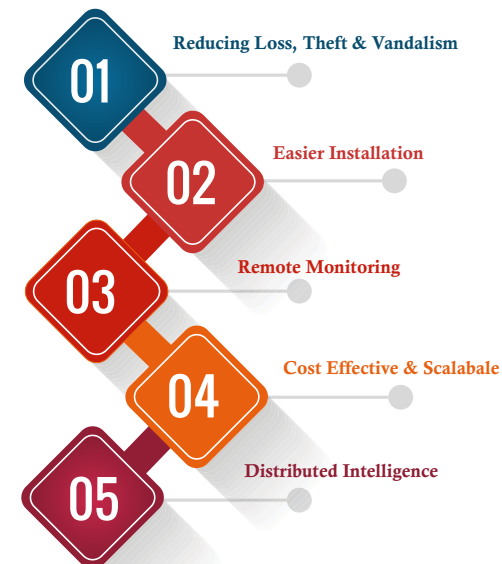
- H.264 Compression
- 8 Channel Tribrid DVR (AHD / IP / Analog)
- Supported Motion Detection, Privacy masking
- 4Ch Audio in, 1Ch Audio Out
- Two way Audio Communication
- 1 SATA Port up to 2X4TB
- HDMI, VGA output and 2 USB Port

**E1B1008N24**

**8 Channel IP/AHD Tribrid NVR/DVR, 720P, 1 SATA**



- H.264 Compression
- 4 Channel Tribrid DVR (AHD / IP / Analog)
- Supported Motion Detection, Privacy masking
- 4Ch Audio in, 1Ch Audio Out
- Two way Audio Communication
- 1 SATA Port up to 2X4TB
- HDMI, VGA output and 2 USB Port



**5 in 1 XVR**

**E1X1016N26**

**16 Channel 5 in 1 XVR - 1080N (1 SATA)**



- H.264 Compression
- 16 Channel 5 in 1 XVR (Analog,AHD,TVI,CVI,IP)  
\*DVR: 16CH 1080N AHD/TVI/CVI  
\*HVR: 8CH 1080N AHD/TVI/CVI+8 CH 1080P IP  
\*NVR: 16CH 1080P IP
- Support Motion Detection, Privacy Masking, Snap shot
- 2 Channel Audio in, 1 Channel Audio out
- Two Way Audio Communication
- 1 SATA Port support up to 6TB
- HDMI, VGA output & 2 USB Port,
- Rs485 PTZ supports

**E1X1008N26**

**8 Channel 5 in 1 XVR - 1080N (1 SATA)**



- H.264 Compression
- 8 Channel 5 in 1 XVR (Analog,AHD,TVI,CVI,IP)  
\*DVR: 8CH 1080N AHD/TVI/CVI  
\*HVR: 4CH 1080N AHD/TVI/CVI+4 CH 1080P IP  
\*NVR: 16CH 1080P IP
- Support Motion Detection, Privacy Masking, Snap shot
- 2 Channel Audio in, 1 Channel Audio out
- Two Way Audio Communication
- 1 SATA Port support up to 6TB
- HDMI, VGA output & 2 USB Port,
- Rs485 PTZ supports

**E1X1004N26**


**4 Channel 5 in 1 XVR - 1080N (1 SATA)**



- H.264 Compression
- 4 Channel 5 in 1 XVR (Analog,AHD,TVI,CVI,IP)  
\*DVR: 4CH 1080N AHD/TVI/CVI  
\*HVR: 2CH 1080N AHD/TVI/CVI+2CH 1080P IP  
\*NVR: 8CH 1080P IP
- Support Motion Detection, Privacy Masking, Snap shot
- 2 Channel Audio in, 1 Channel Audio out
- Two Way Audio Communication
- 1 SATA Port support up to 6TB
- HDMI, VGA output & 2 USB Port,
- Rs485 PTZ supports

# Limitless Surveillance







# Solar Powered Camera

## E1IENL41S4


- 1/2" 1MP Starlight CMOS Sensor
- Day Night Auto (ICR)
- 8 mm Fixed Lens
- Night Visibility 100 Meter
- Efficient Thin-Film Solar Panels
- 40hrs Battery Backup
- 24AH Lithium Battery
- Onvif




720P  
HD




128 GB



40hrs Battery  
Backup



Wi-Fi



4G

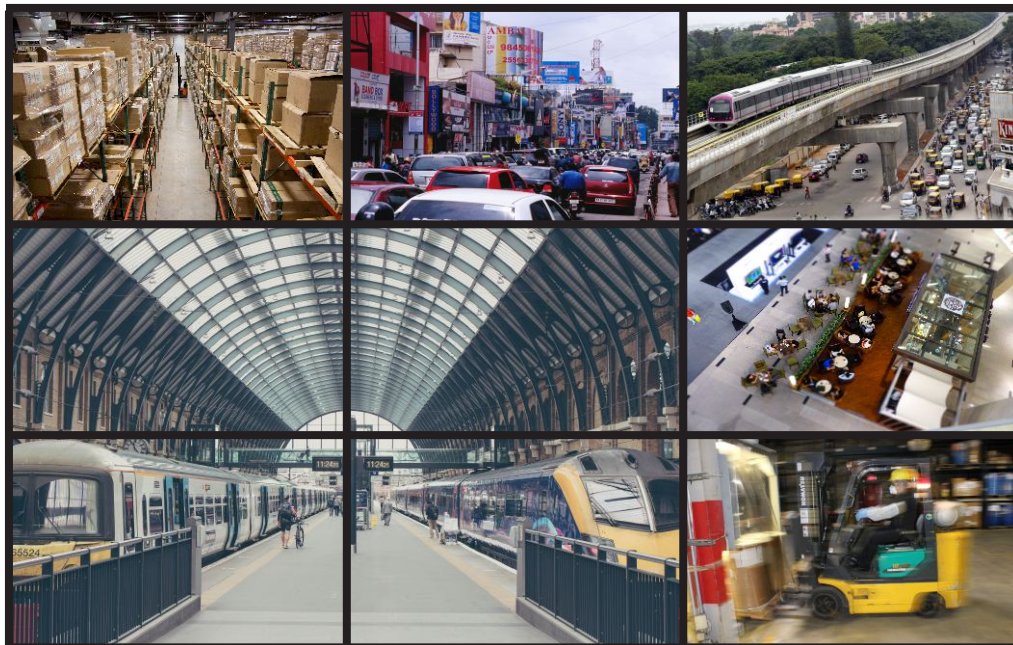
# IP PTZ Keyboard controller

## EJS-IP-1A



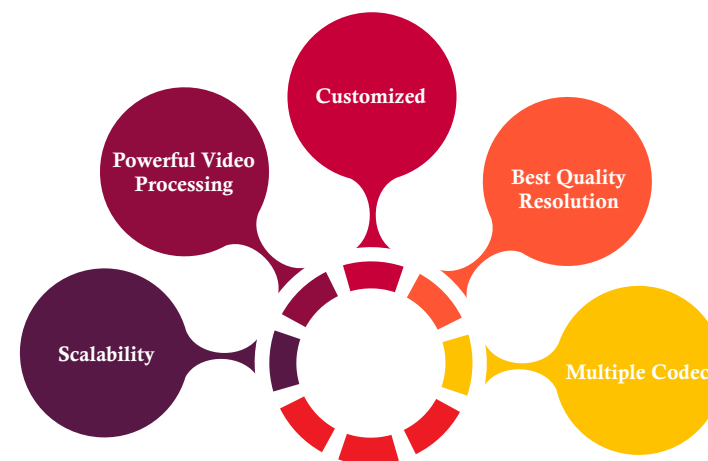
- Support ONVIF2.4, PTZ back-end manufacturers are not subject to restrictions, easy to cruise, scan and other functions
- Plug and Play, without any settings, the keyboard automatically assigned IP
- Standard three-dimensional rocker, the operation more convenient
- Support 1-64 speed limit function, precise positioning, control sensitive
- Support Chinese and English language switch
- Support HDMI output, comes with matrix function
- Support USB interface output
- Support 5-inch high-definition display, control equipment, real-time image display





## Features

- Support ethernet media data access.
- One module supports 2 channels HDMI output
- Supports 4K, 1080P, 1080i, 720P, D1 Video format.
- Supports standard H.265, H.264, MPEG4 bit stream.
- Support Monitor Splicing and device cascading.
- Support audio input and output, Cater to the requirement of monitoring , Broadcast, Intercom.
- Support alarm processing and alarm switch output function.
- Support OSD Function, containing title, time, warning message superposition.
- Co-operate with IPC of indicated brands with out the help of the stream media server.
- Modular design support 8 modules with one case for maximum.



### EN-4025-4KVW

#### Video Wall Controller 4ch HDMI output

- Video Wall Controller 4ch HDMI output
- Maximum for one chassis, support 4K decoding and display,
- Support 25ch1080P windows on one screen,
- Support multi-screen splicing, segmentation, extension, control, etc.

### EN-6025-4KVW

#### Video Wall Controller 6ch HDMI output

- Video Wall Controller 6ch HDMI output
- Maximum for one chassis, support 4K decoding and display,
- Support 25ch1080P windows on one screen,
- Support multi-screen splicing, segmentation, extension, control, etc.

### EN-8025-4KVW

#### Video Wall Controller 8ch HDMI output

- Video Wall Controller 8ch HDMI output
- Maximum for one chassis, support 4K decoding and display,
- Support 25ch1080P windows on one screen,
- Support multi-screen splicing, segmentation, extension, control, etc.

**IP Products**

Model No	Description
E1HD3M42N1	2 MP IP Varifocal Dome Camera, 3 to 12mm , Metal
E1IB2M1311	2 MP IP Varifocal Bullet Camera, 3 to 12mm, Metal
E1IB2M2311	2 MP IP Varifocal Bullet Camera, 3 to 12mm, Metal
E1IB3M4311	2 MP IP Varifocal Bullet Camera, 3 to 12mm, Metal
E1HD1N13N1	5 MP IP Dome Camera, 3.6mm, Metal Vandal Proof
E1IB2N1312	5 MP IP Bullet Camera, 3.6mm, Metal Vandal Proof
E1IB2N2312	5 MP IP Bullet Camera, 6mm, Metal Vandal Proof
E1IB2N2312	5 MP IP Bullet Camera, 6mm, Metal Vandal Proof
E1IB2N3312	5 MP IP Bullet Camera, 8mm, Metal Vandal Proof
E1IB2N4312	5 MP IP Bullet Camera, 12mm, Metal Vandal Proof
E1HD3N42N2	5MP IP Dome, Inbuilt SD card, 3 to 12 mm Motorized lens
E1IB3N4312	5MP IP Bullet, Inbuilt SD card, 3 to 12mm Motorized lens
E1IB3N4312	5MP IP Bullet, Inbuilt SD card, IR Distance 60 Mts
E1IB3N5312	5MP IP Bullet, Inbuilt SD card, IR Distance 80 Mts
E1IB3N6312	5MP IP Bullet, Inbuilt SD card, IR Distance 100 Mts
E2IP2L53N4	2 MP IP Outdoor 2.8 to 12mm Motorized PTZ
E2TP2L93N4	2 MP IP Outdoor 5.1 to 51 mm Motorized PTZ
E2IP2L83N4	2 MP IP Outdoor PTZ Camera, 22X
E2IP2L93N5	2 MP IP Outdoor PTZ Camera, 36 X
E1N2009N2N	9 Channel 4K NVR - 2SATA (H.264)
E1N2032N2N	32 Channel NVR - 2SATA
E1N4036N2N	36 Channel 4K NVR - 4 SATA (H.264)
E1N4064N2N	64 Channel 4K NVR - 9 SATA
E1N4032N21	36 Channel 4K NVR with Video Analytic - 4 SATA
E1N4064N21	64 Channel 4K NVR with Video Analytic - 9 SATA
E1N8128N21	128 Channel 4K NVR with Video Analytic - 16 SATA

**AHD Products**

Model No	Description
E1BD3L4212	1080P AHD Dome Varifocal Camera Metal Vandal Proof
E1BB3L4322	1080P AHD Bullet Varifocal Camera Metal Vandal Proof
E1BD1N1112	4 MP Dome, 3.6mm
E1BB3N1322	4 MP Bullet, 3.6mm
E1BD1N4112	4MP AHD Dome Varifocal Camera Metal Vandal Proof, 2.8 to 12mm
E1BB3N4322	4MP AHD Bullet Varifocal Camera Metal Vandal Proof, 2.8 to 12mm
E2CP2L83N4	2MP AHD PTZ CAMERA , 30X
E2CP2L93N4	2MP AHD PTZ CAMERA , 36X
E1C1004N25	4 channel XVR 4 MP with 1 SATA
E1C1008N25	8 channel XVR 4 MP with 1 SATA
E1C2016N25	16 channel XVR 4 MP with 2 SATA
E1B2004N26	4 channel IP/AHD TRIBRID NVR/DVR 1080N with 2 SATA
E1B2024N24	24 channel IP/AHD TRIBRID NVR/DVR 1080N with 2 SATA
E1B2032N24	32 channel IP/AHD TRIBRID NVR/DVR 1080N with 2 SATA
E1B8032N25	32 channel AHD TRIBRID DVR 1080N with 8 SATA

**For Product Details**

## Clients Trust Us



GE  
Intelligent Platforms



South Western Railway  
*Serving customers with a smile*



దక్షిణ మధ్య రైల్వే  
SOUTH CENTRAL RAILWAY



**Mysore Minerals Limited**  
Government of Karnataka Undertaking

---

**Distributed by:**



**Envision Network Technologies Pvt. Ltd.**

“Envision Technology Center”

#119, Road No. 3, EPIP Area, Phase 1, White Field, Bangalore - 560066, India.

Web: [www.envision.in](http://www.envision.in), [www.cctvbazaar.in](http://www.cctvbazaar.in)

Phone: +91-80-46623200 - 05



**Sales :**

+91 9108951246  
+91-80-46623228  
[sales@envision.in](mailto:sales@envision.in)



**Support :**

080-46623219/251  
[support.cctv@envision.in](mailto:support.cctv@envision.in)  
[support.envision \(Skype\)](https://support.envision.com)  
+91 9590829578

**Branch Operations :**

Bangalore | Hubli | Hyderabad | Visakhapatnam | Mumbai | Pune | Nagpur | Chennai | Coimbatore | Bhubaneswar

★ *Product picture and technical specs subject to change without prior notice.*